

1441 Heritage Parkway, Mansfield, TX 76063
1-800-648-8648 / uacsales@uacparts.com

Universal Under-Dash Units



UN 0886C

Evaporator: (22 Pass 4 Way)

Cooling Capacity: (5596 Kcal./H)

Temp: (Electric Thermo.)

Power: (12V/8.5Ax2)

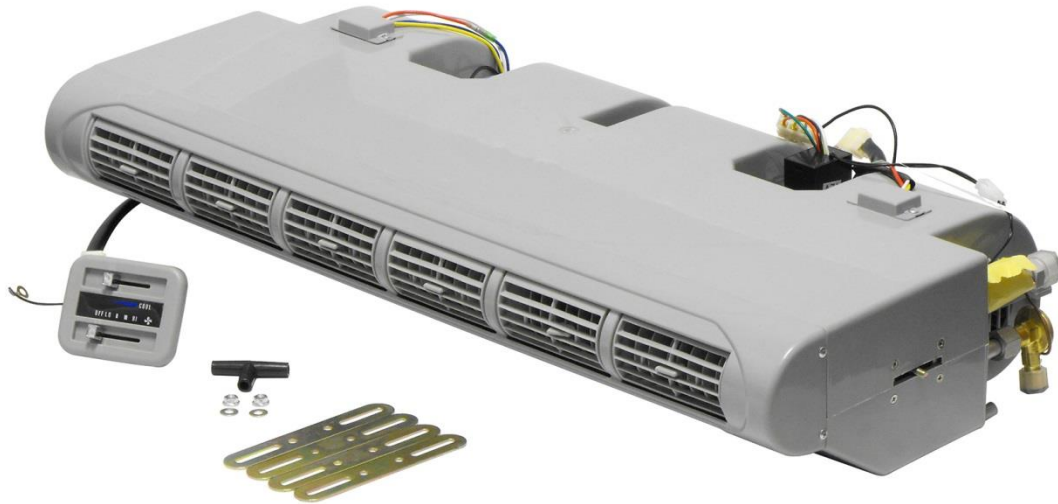
BTU: (2000)

Air Flow: (3 Speed)

Weight: (6.69Kg)

Max Air Vol.: (390 CFM)

Dimension: (680X305X145mm)



UN 0887C

Evaporator: (36 Pass 4 Way)

Temp: (Electric Thermo.)

Cooling Capacity: (8116 Kcal./H)

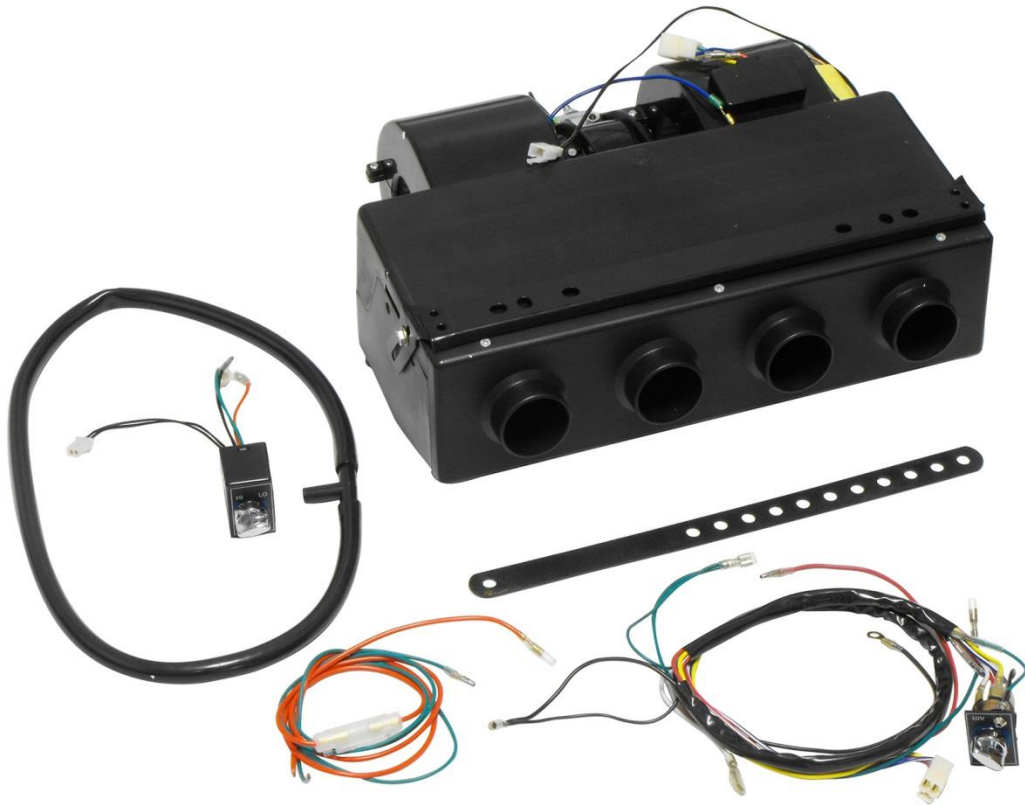
Power: (12V/8.5Ax2)

Air Flow: (3 Speed)

Weight: (8.98 Kg)

Dimension: (802x365x140mm)

Max Air Vol.: (610 CFM)



UN 0888C

Evaporator: (32 Pass 4 Way)

Temp: (Electric Thermo.)

Air Flow: (3 Speed)

Max Air Vol.: (390 CFM)

Cooling Capacity: (3300 Kcal./H)

Power: (12V/8.5A)

Weight: (4.8Kg)

Dimension: (400x330x145mm)



UN 0889C

Evaporator: (32 Pass 4 Way)

Cooling Capacity: (3300 Kcal./H)

Temp: (Electric Thermo.)

Power: (12V/8.5A)

Air Flow: (3 Speed)

Weight: (4.8 Kg)

Max Air Vol.: (390 CFM)

Dimension: (400x330x145mm)



UN 0890C

Evaporator: (34 Pass 4 Way)

Temp.: (Electric Thermo.)

Air Flow: (3 Speed)

Max Air Vol.: (200 CFM)

BTU: (13700)

Cooling Capacity: (3300 Kcal./H)

Power: (12V/8.5A)

Weight: (4.8 Kg)

Dimension: (400x330x145mm)



UN 0891C

Evaporator: (36 Pass 4 Way)

Temp: (Electric Thermo.)

Air Flow: (3 Speed)

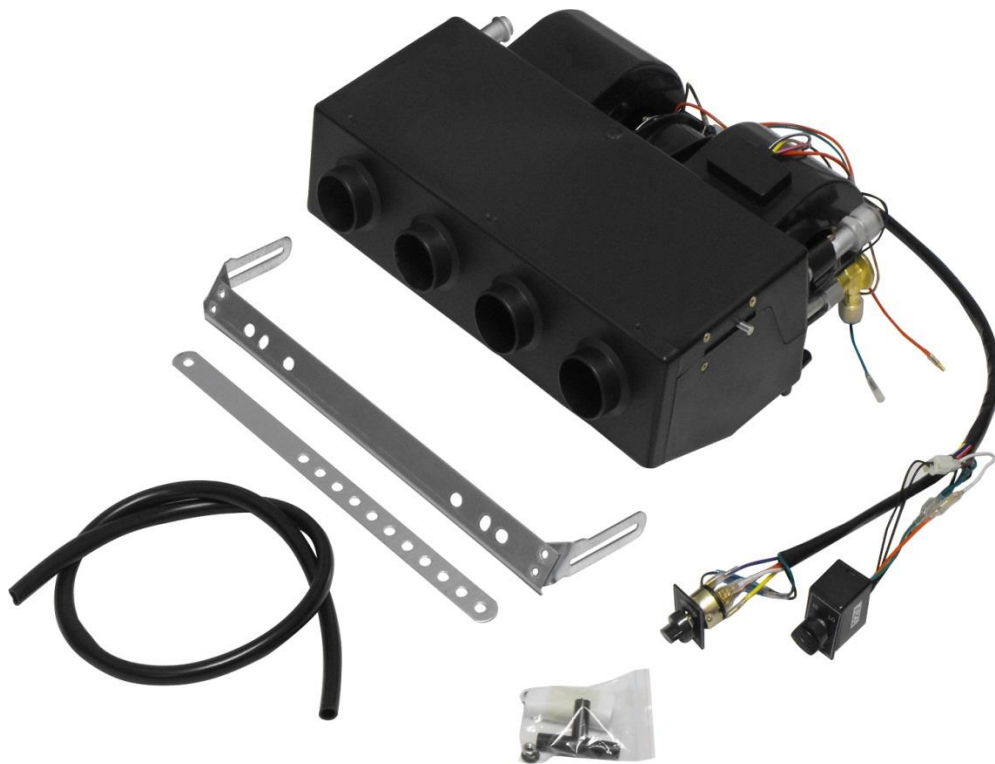
Weight: (8.98 Kg)

Dimension: (802x365x140mm)

Cooling Capacity: (8116 Kcal./H)

Max Air Vol.: (610 CFM)

Power: (12V/8.5Ax2)



UN 0894C

Evaporator: (Heat-6Pass 2Ways Al. / Cool-22Pass 4Ways Al)

Weight: (4.8KG)

Temp: (Electric Thermo.)

Air Flow: (3 Speed)

Dimension: (404x305x156mm)

Max Air Vol.: (12V-600 / 24V-681 M³/hr) **Power:** (12V,7.6A / 24V,4.7A)

Cooling Capacity: (12V-4107 Kcal / 24V-4431Kcal)

Heating Capacity: (12V-3619 Kcal / 24V-3904 Kcal)



UN 0895C

Evaporator: (32 Pass 4 Way Alum.)

Temp: (Mechanical Thermo.)

Air Flow: (3 Speed

Max Air Vol.: (562 / 586 M³/hr.)

Power: (12V, 6A / 24V, 4A)

Cooling Capacity: (18853 BTU / 19332 BTU)

Dimension :(677x298x143mm)



UN 0896C

Evaporator: (22 Pass 4 Way Alum.)

Temp: (Electric Thermo.)

Air Flow: (3 Speed)

Max Air Vol.: (1017 / 1184 M³/hr.)

Power: (12V, 10.6A / 24V, 6A)

Cooling Capacity: (20697 BTU / 22674 BTU)

Dimension :(404x335x156 mm)